

Thinking of you

Electrolux

electrolux premium laundry collection
front load washing
condenser drying





intuitive innovation in washing and drying

The Electrolux Premium Laundry collection represents significant advances in washing and drying. Each appliance incorporates time saving technology, thoughtful innovation and ergonomic design, to take exceptional care of you and your most delicate garments.



Time Manager angled wash system (EWN14991W) and Energy Star dryer (EDH97950W)



Time Manager angled wash system EWN14991W

electrolux **TIME MANAGER** – set your own wash time

Have you ever wished for more control over how long you want to spend washing clothes? Electrolux **TIME MANAGER** front load washers are a brilliant example of thoughtful innovation with you in mind. They are a unique range of front load washers that lets you set the time your wash takes, not the machine.

choose a time that suits you and your wash

If you don't have time to wait for a long wash, the **TIME MANAGER** allows you to select a program to significantly reduce washing time. A less dirty wash means a shorter time. A heavier soiled wash – a longer time. This comes from a simple understanding that not every load requires the same long washing cycle for an efficient clean.

angled wash drum for easy reach

Contemporary European style and thoughtful innovation give you an ergonomic inclined drum so you can load and unload your washing with ease.

superior care of your clothes

Jetsystem is a constant gentle shower that massages the water and detergent through your wash to give your clothes the superior care they deserve.

premium wash efficiency

The **TIME MANAGER** angled wash system is awarded a 4.5 star WELS* water efficiency rating. The unique wash system credited for this efficiency, adjusts the amount of water used according to the size of the load. This means you only use the water you need.

*WELS Standard: AS/NZS 6400.2005



Ergonomically designed angled drum means less bending, alleviating pressure on your back



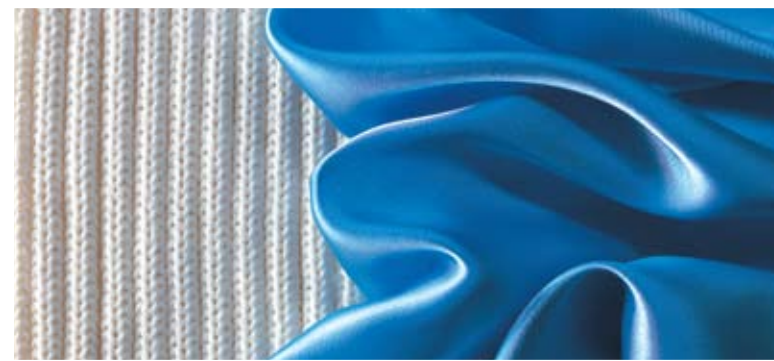
8kg capacity handles large towels, quilts and blankets



Set the time to suit your lifestyle

energy star dryer superior efficiency

The Energy Star low energy drying system represents a breakthrough in tumble dryer technology. It offers great energy savings, as well as thoughtfully designed features that gently dry the most delicate of fabrics.



Delicately dries wool and silk

energy efficient

Awarded a 5.5 star energy rating, the Energy Star dryer effectively dries your clothes while minimising the impact on your environment and your wallet.

give clothes the luxury treatment

The Energy Star dryer has a range of thoughtful programs designed to take extra care of the most delicate pieces. It provides the gentlest drying of silk, wool and other delicate mix fabrics, ensuring a superior result in minimum time.

auto sensing

The Energy Star dryer has the ability to dry faster at gentler temperatures than conventional condenser dryers. Auto-sensing achieves exceptional drying results on all fabrics in the shortest amount of time.

effective drying all year round

While conventional dryers can find extreme temperatures such as high humidity difficult to operate efficiently in, the unique drying system in the Energy Star dryer ensures consistent drying results all year round. No matter where you live, your finest garments will always be given luxury treatment.

easy to install

The Energy Star dryer reuses heat rather than releasing it into the laundry. It has a self contained drying system that collects moisture from the drying process. This means no venting kit is required, leaving the laundry cleaner and free of hot moist air.



Energy Star dryer EDH97950W

electrolux ironaid™ dryer with steam system

Alex Perry has long admired the design and innovation behind Electrolux products, so becoming the Electrolux Fabric Care partner was a natural step.



Says Alex, "Many garments are suitable for the IronAid dryer, which is why I am proud of this alignment. Delicate gowns with boning, sequin detailing, lace, feathers, chiffons, fine silks or tailored suit jackets and shirts can all be refreshed using the 'Refresh' cycle. And something you would normally think twice about putting near an ordinary dryer, like silk shirts, can be safely dried in the IronAid using the Silk Cycle". So why not let the dryer help you with the ironing?

who likes to iron?

There is every indication that ironing is the most disliked laundry chore. It takes a lot of time, requires a lot of effort, skills and technique. It is stressful, requires

some planning, takes up space and can damage the clothes. Or if we go straight to the point, there are more interesting activities than ironing to spend time on. This is the reason why we are introducing IronAid, which helps you to keep your clothes smooth and fresh.

how does it work?

IronAid is a unique condenser dryer that uses steam to relax the fibres of your clothes. This will reduce, or even eliminate* the need to iron – in just twenty minutes! There's no need to vent externally, as the dryer collects moisture from the drying process within the machine, making your living environment cleaner and more pleasant.

reduce your dry cleaning!

The refresh program allows you to remove creases from a dry clean only suit. It can also remove odours, such as smoke, reducing the need to dry clean as often. The dual motor technology means you can even use the IronAid dryer to delicately dry wool or silk garments.

sensor dry for perfect results

Auto-sensing gives you exceptional drying results and precise control, to ensure you never under or over dry clothes. Sensors detect the degree of moisture in garments and automatically dries them according to the program selected.

* depending on fabric type

*“It’s great to be able to pop
in a suit jacket or party dress
between wears and reduce
expensive dry cleaning bills”*

– Alex Perry



front load washer features†



model	EWN14991W Time Manager
capacity (kg)	8
wash system	angled
wash technology	jetsystem™
stainless steel bowl	▪
WELS^ water efficiency star rating	4.5
water consumption (litres)	66
energy consumption (kWh/yr)	238
energy star rating	4.5
noise rating in wash mode dB(A)	54
LCD display	▪
child lock	▪
internal drum light	▪
wash programs	
number of programs	11
favourite program memory	▪
cotton/daily cotton	▪
eco	▪
synthetics, delicates, wool, handwash	▪
easy iron	▪
silk	▪
quick	▪
bedding	▪
sensitive plus	▪
quick 14	▪
night cycle	▪
rinse, drain + spin	▪
delicate spin	▪
wash options	
pre-wash	▪
quick wash/time save	▪
extra rinse	▪
delay start	▪
variable spin speeds	0-1400
3 chamber detergent dispenser drawer (pre-wash/wash/fabric conditioner)	▪
water inlet	cold only
water pressure requirements – kPa (min-max)	50-800
levelling legs – adjustable	4
dimensions	
product (h x w x d) mm	850 x 600 x 630
accessories	
stacking kit – CN 14 UNIVE (fits all Electrolux condenser dryers)	optional extra

^ WELS Standard: AS/NZS 6400.2005

condenser dryer features†

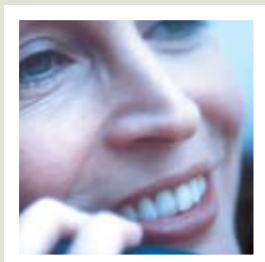


model	EDI96150W IronAid™	EDH97950W Energy Star
capacity (kg)	6	7
dryer type	condenser	condenser with heat pump
electronic sensor controls	▪	▪
stainless steel drum	▪	▪
reversing tumble action	▪	▪
energy star rating	2	5.5
energy consumption (kWh/yr)	264	177
noise dB(A)	64	68
fabric care		
auto-sensing option	▪	▪
delicates setting	▪	▪
silk setting	▪	▪
woollens setting	▪	▪
jeans setting	▪	▪
damp program	▪	▪
strong program	▪	▪
extra dry function (cottons + synthetics)	▪	▪
iron function	▪	▪
crease-free option	▪	▪
Iron Aid™ program	▪	▪
refresh program	▪	▪
dryness level setting	▪	▪
mix program	▪	▪
cooling program (refresh/gentle cycle)	▪	▪
ease of use		
front lint filter	▪	▪
clean lint filter LED	▪	▪
empty condenser reservoir reminder LED	▪	▪
LCD control panel	▪	▪
delay start options	▪	▪
drying time*	150 minutes	185 minutes (without cooldown)
alarm	▪	▪
time to program start/delay/end	▪	▪
warning lights	▪	▪
safety		
remote element – rear	▪	▪
safety thermostat heater	▪	▪
child safety lock door	▪	▪
dimensions		
product (h x w x d) mm	800 x 600 x 602	850 x 600 x 580
door opening width (mm)	430	430
element drying power (watts)**	2000	1350
accessories		
stacking kit – CN12-3 (fits all Electrolux front load washers except EWN14991W)	optional extra	optional extra
stacking kit – CN 14 UNIVE (only fits EWN14991W)	optional extra	optional extra
pedestal + laundry basket – PDSTDRW04	optional extra	optional extra

* Drying time is based on standard load - can vary due to fabric type used and includes cooling stage at end of cycle. ** Suitable for standard 10Amp circuit.

electrolux top service

Electrolux Top Service encompasses the after sales service including Delivery, Home Service and Spare Parts.



delivery

The purchase of a new appliance is an exciting experience. Electrolux customers can, for an additional charge, choose to have their new appliance delivered by our experienced staff. This service, at the customer's option, includes the removal and recycling of packaging materials and even the old appliance if necessary. Delivery is available in Adelaide, Brisbane, Melbourne, Perth and Sydney. It may not be available in some rural locations and is not available in New Zealand.

home service

Home Service is provided for repairs to appliances by trained technicians. For repairs to appliances that are outside the manufacturer's warranty period and not required as a result of a manufacturing defect, a service fee is payable. Home Service is available throughout Australia and New Zealand.

spare parts

Home Service and Spare Parts can be contacted by phone using our toll free national numbers.

Australia

Service 13 13 49
Spare Parts 13 13 50
www.electrolux.com.au

New Zealand

Service 0800 10 66 10
Spare Parts 0800 10 66 20
www.electrolux.co.nz

customer care

For more information on Electrolux products, please call our Customer Care team or visit our website.

Australia

1300 363 640

New Zealand

09 573 2230

warranty

Electrolux Home Products warrants that for domestic applications the Electrolux Premium Laundry products featured in this brochure are free from defects in materials and workmanship for 2 years (3 months warranty for commercial applications). All warranties are subject to the conditions set out in the warranty card accompanying the product when purchased.

product information

The descriptors and illustrations in this publication apply to the specific products and models described as at the date of issue. Under our policy of continuous product development, product specifications may change without notice. Prospective purchasers should therefore check with their retailer to ensure this publication correctly describes the products that are being offered for sale. All information supplied is to be used for general reference purposes only and is on the understanding that Electrolux Home Products Pty Ltd will not be liable for any loss, liability or damage of whatever kind arising as a result of reliance on such information. Colours of products illustrated are as close as printing limitations allow.



**Electrolux Home Products
Australia**

telephone: 1300 363 640
fax: 1800 350 067
email: customercare@electrolux.com.au
web: www.electrolux.com.au

New Zealand

telephone: 09 573 2230
fax: 09 573 2221
email: customercare@electrolux.co.nz
web: www.electrolux.co.nz

The Thoughtful Design Innovator.

Do you remember the last time you opened a gift that made you say "Oh! How did you know? That's exactly what I wanted!" That's the kind of feeling that the designers at Electrolux seek to evoke in everyone who chooses or uses one of our products. We devote time, knowledge, and a great deal of thought to anticipating and creating the kind of appliances that our customers really need and want.

This kind of thoughtful care means innovating with insight. Not design for design's sake, but design for the user's sake. For us, thoughtful design means making appliances easier to use and tasks more enjoyable to perform, freeing our customers to experience that ultimate 21st century luxury, ease of mind. Our aim is to make this ease of mind more available to more people in more parts of their everyday lives, all over the world. So when we say we're thinking of you, you know we mean just that.

The "Thinking of you" promise from Electrolux goes beyond meeting the needs of today's consumers. It also means we're committed to making appliances safe for the environment—now and for future generations.

Electrolux. Thinking of you.

Share more of our thinking at www.electrolux.com.au or www.electrolux.co.nz